



**Agriculture**  
in the **classroom**

CULTIVATING AN INTEREST IN AGRICULTURE



**EMPOWERING GROWTH**

**for Generations  
to Come**

**2018 Annual Report**



[aitc.mb.ca](http://aitc.mb.ca)

# 30 YEARS OF AG EDUCATION

## IT STARTED WITH A DREAM

Agriculture in the Classroom-Manitoba (AIRC-M) started in 1988 with a big dream to teach students about the importance of agriculture. The organization has expanded in size and reach, now impacting 30,000 students and educators a year – that’s something to celebrate!

Agriculture in the Classroom-Manitoba is a non-profit, charitable organization dedicated to developing curriculum-linked programs, resources and activities for teachers and students to learn more about the importance of agriculture in Manitoba.

We strive to achieve our ABC mandate in everything we do, which is to be ACCURATE, BALANCED and CURRENT. This allows students to develop critical thinking skills related to agriculture, food, bioproducts and life sciences.



### OUR VISION

All Manitoba educators and students understand and value the contribution of agriculture to society.



### OUR MISSION

Agriculture-literate students become informed consumers and decision makers. By developing and delivering accurate, balanced and current agriculture-literacy programs and resources to Manitoba schools, AIRC-M ensures educators and students understand and value the contribution of agriculture to society.



### OUR VALUES

**Excellence** - We strive for excellence in delivering accurate, balanced and current resources and programming to Manitoba schools, making learning fun, interactive and accessible.

**Integrity** - We operate with integrity, especially as it relates to the accuracy and balance of the information we share with educators and students. We treat all stakeholders with respect.

**Learning** - We are devoted to providing enriching learning experiences to educators and students, with the goal to encourage critical thinking. Every offering fits within the Manitoba curriculum and helps students advance through the Pillars of Agricultural Literacy.

**Accountability** - We are accountable to our stakeholders in Manitoba schools, our members, volunteers and sponsors. We communicate openly and transparently, ensuring information is readily available and accessible.

**Passion** - We are passionate about agriculture and enthusiastically embrace opportunities to share the story of agriculture with educators and students at all stages of learning and development. We pledge to go the extra mile to create fun, memorable experiences.



## OUR TEAM STAFF



**SUE CLAYTON**  
Executive Director



**RENEE REIMER**  
Finance Coordinator



**TENESHA LAWSON**  
Communications Coordinator



**KATHARINE CHEREWYK**  
Program & Volunteer Manager



**KIRA ROWAT**  
Program Manager



**KAREN HILL**  
Curriculum Specialist



**LARISSA PEITSCH**  
Program Assistant

### A MESSAGE FROM THE EXECUTIVE DIRECTOR

As we celebrated our 30th year, Agriculture in the Classroom – Manitoba had more opportunities than ever to help students and educators learn where their food comes from and equip them to engage in meaningful conversations about food.

With students and educators two to three generations removed from the farm, the importance of public trust in agriculture and our food supply has never been greater. The demand for our programs has increased to the point that they all have extensive wait lists. Clearly, after 30 years, Manitoba educators know who to turn to for accurate, balanced and current curriculum-linked agricultural programs and resources.

The difference we are making is clear, and much of the credit is due to the strength of our partnerships with schools, industry, government and the community, as well as our dedicated staff, board members and volunteers. As a nonprofit, charitable organization, we simply could not succeed without your support.

The agriculture industry is complex and multi-faceted, but our story is simple and heartfelt: it's about more than food's journey from gate to plate, or piquing interest in agriculture, or maintaining public trust, or preparing our industry's future employees and consumers. Our story is rooted in each of us – the people who work together to help our industry grow.

With your continued support, we look forward to empowering growth for generations to come!

*Sue Clayton* **SUE CLAYTON**  
Executive Director



## BOARD OF DIRECTORS



**KELLY FUNKE**  
Cargill Canada  
President



**LAUREL LYONS**  
Manitoba Pork Council  
Vice-President



**TRISH JORDAN**  
Bayer CropScience  
Past President



**EDWARD COOK**  
Treasurer,  
Producer



**BOB BARTLEY**  
Producer



**BONNIE BAIN**  
Farm Credit Canada



**DIANNE RIDING**  
Producer



**GAIL ECKERT**  
Summit Search Group



**LANDON FRIESEN**  
Producer



**LAURA HOLTSMANN**  
Producer



**PATSY MICHELIS**  
Agriculture  
and Agri-Food Canada



**SHEENA PITURA**  
CANTERRA SEEDS



**THERESA BOLTON**  
Parrish and Heimbecker



**TIM SWYNAR**  
Royal Bank of Canada



**TRACEY SHELTON**  
Richardson International

## A MESSAGE FROM THE PRESIDENT

Can you feel it? We're gaining momentum. When I sit at the Agriculture in the Classroom-Manitoba board table or volunteer at our events, I have the sense that we are making a difference. With each school year, we not only remain focused on the pursuit of a future where all Manitoba educators and students understand and value the contribution of agriculture to society, but we also move the needle.

I feel confident that AITC-M is gaining traction in Manitoba schools and among the ag industry. And there's more than anecdotal evidence to prove it. This year our programming was featured in 180 schools, and our volunteer list has grown to 716. We were also the recipients of funding from the Government of Manitoba that allowed us to build a strategic plan that will continue the momentum to 2021.

I cannot imagine a better organization for any ag industry member to partner with than one committed to the core values of AITC-M: Excellence, Integrity, Learning, Accountability, and Passion. In many ways, I believe our statement around passion says it best: We pledge to go the extra mile to create fun, memorable experiences.

But passion alone won't accomplish our mission. Without consistent support from all sectors of the ag industry we risk losing our momentum. It's in the best interest of all of us who earn our living in agriculture and those of us who care about the future of our industry to join the movement and keep driving toward the future.

**KELLY FUNKE**  
President



## OUR PROGRAMS

It's incredible to see the impact agriculture education can have over a generation. Thirty years ago, we started developing resources for teachers. Now we have eight flagship programs, a diverse resource library, offer teacher professional development days, in addition to various special events throughout the year.

As students and teachers experience Canadian agriculture through our programs and resources, their perception of Canadian agriculture positively changes as they deepen their relationship with food and farming.

## LITTLE GREEN THUMBS MAKING LEARNING COME ALIVE

Each year we get closer to our vision of a garden in every school. We launched the Little Green Thumbs as a flagship program in 2011 with three gardens. Now, 48 schools across the province are growing food all year long. For many students, this is the first time they get to see a tiny seed grow into food they can harvest, eat and share with their classmates. Students truly experience how much hard work, patience and care goes into producing healthy food.

Little Green Thumbs students have an undeniable connection to where their food comes from. But learning doesn't stop there - these living laboratories also provide a place where students can apply and learn real-life STEM (Science- Technology- Engineering- Math) skills. It also encourages students to communicate, collaborate and think critically.

### FUN FACTS

- LGT classes grow a purple bean variety that can grow 2 meters tall in the classroom!
- Every LGT classroom receives approximately 1,000 vermicomposting worms when they join the program. Lunch food scraps are transformed into plant nutrients.



**48 SCHOOLS**



**53 GARDENS**



**66 TEACHERS**



**1,895 LITTLE GREEN THUMBS**

2,445 students are indirectly impacted by this program



*"When we were starting out, one of my students, after moving soil into the earth boxes said, 'I feel like a real farmer!'"*  
- Teacher



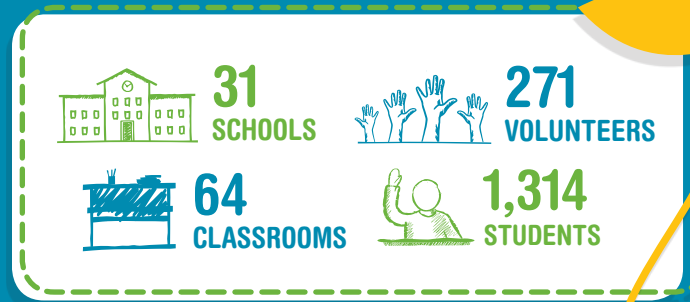
*The LGT program has built an excitement in the building that has allowed us to build up on existing structures and to develop new possibilities as all classes 'want in on the action'.*  
- Teacher

# AMAZING AGRICULTURE ADVENTURE

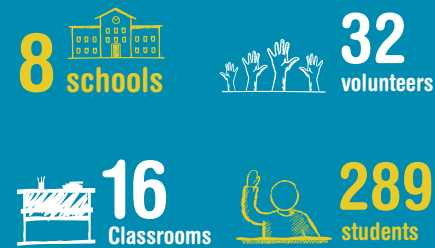
## BRINGING THE FARM TO STUDENTS

Students learn best by doing – this is exactly how the Amazing Agriculture Adventure (AAA) exposes students to many facets of Canadian agriculture. This year, AAA was delivered in Russell, Brandon and Winnipeg. Hundreds of students got their hands dirty as they cycled through a number of interactive stations covering a variety of agriculture topics around crops, animals and farm business.

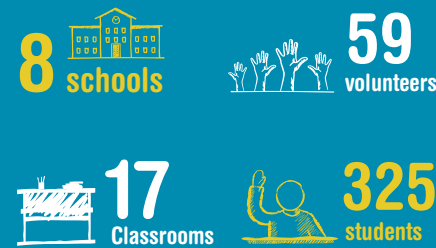
Many students who participate in our programs have little connection to where their food comes from, and many only experience getting food from the grocery store. But the food journey doesn't start there. It starts on the farm so we bring a farm experience to students.



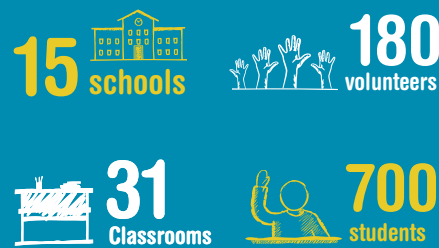
### RUSSELL



### BRANDON



### WINNIPEG



*"The best thing about AAA for me was seeing the kids have the light bulb moment and start to put together what it takes to grow a crop along with understanding the economic benefits that come to their community."*  
- Volunteer



### FUN FACTS

- The infamous cookie auction takes place at every Amazing Agriculture Adventure. Throughout the day students earn AG bucks to bid on their favourite kind of cookie during the cookie auction!
- The very first Amazing Agriculture Adventure was held in Winnipeg in 2000. Now the program is held annually in Winnipeg and Brandon and biennially in Russell.

# AGRICULTURE IN THE CLASSROOM CANADA

## GROWING OUR REACH FROM COAST-TO-COAST



Collectively, Agriculture in the Classroom provincial organizations believe in enhancing students' knowledge and appreciation of agriculture and food in Canada. As part of a cross-country effort, Agriculture in the Classroom Canada (AITC-C) stands as the national voice for agriculture education in Canada.

Alongside its AITC member organizations, AITC-C is driven by a passion for the agriculture and food sector and lifelong learning. Together, we are committed to engaging Canadian students and educators to enhance their knowledge and appreciation of agriculture and food. Transparency, integrity, empowerment and collaboration firmly ground us in everything we do.

### We are stronger together!

AITC-M is proud to be a member of AITC-C and collaborate with all Agriculture in the Classroom organizations across the country. Our unified goal of connecting kids and agriculture drives us to make a difference provincially, but better yet, nationally.



## AITC-C'S EXPERIENTIAL PROGRAMS AND EVENTS DELIVERED PROVINCIALY

### thinkAG

ThinkAG is a dynamic and interactive collection of teaching resources and outreach tools that encourage exploration and curiosity into the myriad of career opportunities available in the agriculture and food sector.

### CANADIAN AGRICULTURE LITERACY MONTH

CALM is a hands-on program that encourages children to learn about and celebrate Canada's agriculture and food story. Students get a visit with a farmer or agriculture professional who shares their story, does an agricultural activity with them and brings an ag-based book.

### JOURNEY 2050

Journey 2050 takes students on a virtual simulation that explores world food sustainability. The program allows students to make decisions through interactive video games and witness their impact on a local and global scale.

### genAG

GenAG is a unique career exploration program for high school students. In groups, students compete in provincial marketing competitions for a chance to win prizes and be profiled on the AITC Canada website and social media platforms.

- Manitoba's 2018 genAG winners were a group from Swan Valley Regional Secondary School named genAG Career Corp. This team of nine organized a day-long agriculture career fair focused on introducing ag careers to their peers.

## AITC-C'S CURRICULUM-LINKED RESOURCES

- thinkAG Toolkit
- Planet X
- What's Your Something Careers Infographic
- #MyFoodChoice
- What's in Your Lunchbox Kit
- Ag Careers online profiles
- snapAG fact sheets
- Canadian Educator Matrix with over 60 resources

*"AITC-M is one of nine provincial AITC organizations committed to a collective, cross Canadian effort, and we thank AITC-M and all its stakeholders, funders and volunteers for the incredible impact it is making in schools across Manitoba. We love working alongside you!"*  
- Johanne Ross, Executive Director of Agriculture in the Classroom Canada



For more information about Agriculture in the Classroom Canada, please visit [aitc-canada.ca](http://aitc-canada.ca)

# AITC-M DRIVER AWARD 2018

Energetic, positive, passionate and dedicated, are just a few words that describe our 2018 Teacher Driver Award recipient. Couple that with a genuine interest and motivation to bring agriculture to her students and you have this year's successful nominee: **Linda Baines, Grade 2 teacher at Polson School in Winnipeg, Manitoba!** Linda was nominated by her colleague, Rachel Galindo.

For five years, Linda has taken our Little Green Thumbs classroom gardening program to the next level. Using the garden, her Grade 2 class Pen Pals other LGT schools across the country, drawing and writing updates on what's growing in their garden. Linda has vermi-composting worms, an outdoor school garden and is also working on publishing a garden recipe book.

In addition to gardening, Linda participated in many seed growing experiments like Tomatosphere, where they investigated the effects outer space has on seed germination. She started cooking with fruits and vegetables from around the world and had students plant seeds from imported fruits and vegetables from their lunches just to experiment! Linda also incubates and raises chicks and ducklings in her class each year.

Linda is a leader in agriculture education and AITC-M is honoured to be able to work with an educator who serves as a role model for others on how to inspire young people to care about food and farming.

*"I can tell agriculture educators make a difference when I hear and see my students excited conversations about the things we are doing. They come in everyday excited asking, "Can we see the garden today? Can I go water? What are we making/cooking this week?" Thank you, AITC-M. There is no way this learning would be possible without your support!"*  
**– Linda Baines**



## WHAT CAN YOU DO?

We need your help informing teachers and their students about the important role agriculture plays in our province. Join us in empowering future consumers to care about the industry we love. For more information, please visit [aitc.mb.ca](http://aitc.mb.ca).

1

### BECOME A MEMBER OR DONOR

Membership and donations allow us to reach 30,000 students every year. We can't meet the demand for agriculture education without individual and corporate support dollars. Visit our website to become a member or to make a donation.

2

### VOLUNTEER

Volunteers are the heartbeat of our organization. They are the face of agriculture for us and our students. Donate your time, passion and smile for one or more of our programs. Get started by completing our volunteer registration form on our website.

3

### EMPOWER OTHERS

Sharing your agriculture story with others encourages them to do the same. Together, we can amplify our story and set the record straight.

## CORPORATE SPONSORS

### Cultivator

Cargill Ltd  
 Dairy Farmers of Manitoba  
 Growing Forward 2  
 Manitoba Canola Growers Association  
 Manitoba Pork Council  
 Manitoba Pulse & Soybean Growers  
 Monsanto Canada  
 Mosaic  
 Nutrien  
 Richardson International

### Patron

Archer Daniels Midland Company  
 Bayer

Manitoba Beef Producers  
 Man/Sask Cattlemen's Golf Tournament  
 Manitoba Ag Days

### Builder

Manitoba Corn Growers Association Inc  
 MacDon Industries  
 Dow AgroSciences  
 Grain Elevator and Processing Society  
 Manitoba Education and Training  
 Parrish and Heimbecker  
 Viterra

### Partner

Access Credit Union

Ag Advantage Ltd  
 BDO Cda LLP - Western Cda Region  
 Border Chemical Company Ltd  
 CAMA  
 CANTERRA SEEDS  
 Countryside Farms  
 Farm Credit Canada  
 Keystone Agricultural Producers  
 Manitoba Agriculture  
 Manitoba Chicken Producers  
 Manitoba Egg Farmers  
 Manitoba Potato Production Days  
 Manitoba Veterinary Medical Association  
 Munro Farm Supplies

One Insurance  
 Scott Wolfe Management Inc  
 Shafer Commodities Inc  
 Shur-Gro Farm Services Ltd  
 Syngenta Canada  
 The Manitoba Oat Growers Association  
 Think Shift

### Contributor

Agassiz Seed Farm Ltd  
 Assiniboine Community College  
 Clearview Consumers Co-op Ltd  
 Dundee Farms  
 Field 2 Field Agronomy Inc  
 Heritage Co-op

Loadline Inc  
 Manitoba Agricultural Services Corporation  
 Manitoba Auctioneers Association  
 Manitoba Seed Growers Association  
 Manitoba Sheep Association  
 Manitoba Turkey Producers  
 Northern Quinoa Production Corporation  
 Park Acres  
 Pitura Seeds  
 RM of Hanover  
 RM of LaBroquerie  
 RM of Oakview

## INDIVIDUAL MEMBERS

### Pacesetter

Trish Jordan

### Enthusiast

DL Seeds  
 Greenland Equipment Ltd  
 Mike Orchard  
 Municipality of Rhineland  
 RM of Wallace - Woodworth  
 Sherry Woods  
 Sue and Kern Clayton  
 Whitemud Watershed Conservation District

### Supporter

Adrien Caillier/A.R.K. New-Tech  
 Art Enns & Sons Ltd  
 Baret Easter  
 Bill Anderson  
 Bob Bartley  
 Bonnie Glasman  
 Bruce & Carol Dalgarno  
 Cooks Creek Conservation District  
 Ellis Farm Supplies Ltd  
 Faculty of Agricultural and Food Sciences  
 Goodwin Ballance Communications  
 Grace & Matthew Wedlake Haybusters  
 Hometown Service Ltd  
 J & V Pedersen Ltd  
 Jason McIntosh  
 Landon Friesen  
 Leanne Campbell  
 Manitoba Women's Institute

Martin Farms Ltd  
 Peak of the Market  
 Prairie Fruit Growers Association  
 Redfern Farm Services Ltd  
 Richard & Allison Leclerc  
 RM of Brenda-Waskada  
 RM of Lorne  
 RM of Minto-Odanah  
 RM of North Cypress-Langford  
 RM of Pipestone  
 RM of Roland  
 RM of Ste Anne

Roland Air Spray  
 Scheurer Farms Ltd  
 Seed-Ex Inc  
 Shelley Bartley  
 Theresa Falk  
 Town of Carman  
 Upper Assiniboine River Conservation District  
 West Souris Conservation District

### Friend

Al Raine  
 Allan Calder  
 Alonsa Conservation District  
 Andy Cardy  
 Assiniboine Hills Conservation District  
 Barry & Johanne Ross  
 Barry McNabb  
 Basswood Women's Institute  
 Beauchemin Enterprise  
 Bernie Funk  
 Bill Ross & Jocelyn Peifer Ross

Blaine Pedersen  
 Bob Horsman  
 Boerchers Farms Ltd  
 Bonnie Bain  
 Brian Kenyon  
 Brian Nedohin  
 Bruce Montgomery  
 Catherine Klassen  
 Cathey Day  
 Cheryl Mayer Hrushowy  
 Clayton Robins  
 Cliff Cullen  
 Colpitts Farm Ltd  
 Corie & Neil Arbuckle  
 Corin Raine  
 Crystal City-Clearwater Agricultural Society  
 Crystal Jorgenson  
 Curtis McRae  
 D Mack Farms Ltd  
 Darrell Friesen  
 Delwyn & Heather Fraser  
 Derek Baschuk  
 Derek Read  
 Diane & David Wreford  
 Diane Peckover-Hayward  
 Dianne Riding  
 Doug Chorney  
 Edward Cook  
 Ellen Pruden  
 Finlay Farms 89 Ltd  
 Fork River Women's Institute  
 Gail Eckert  
 Henry Farms Ltd

Henry Holtmann  
 Herbsigwil Ltd  
 Ideal Pipe  
 Inwood Women's Institute  
 Isabella Women's Institute  
 James Swan Ltd  
 Jessica Brady  
 Jillian Krahn  
 JoAnne Buth  
 John Chorney Farms Ltd  
 John Peach  
 Jon Lewis (Jon Co Inc)  
 Judy Wilson  
 Karen Hill  
 Katherine Stanley  
 Keith & LeeAnne Murphy  
 Kelly Funke  
 Kelly Green  
 Kenton Johnston  
 Kevin McCallum  
 Laura Holtmann  
 Laurel Lyons  
 Leanne Sprung  
 Les & Celeste Felsh  
 Les & Diane Mauthe  
 Livingston Family Farms Inc  
 Lloyd & Joan Atchison  
 MacNair Farms Ltd  
 Martin Leyenhorst  
 Marvin & Margaret Elder  
 Mary McPhee  
 McCutcheon Farms Ltd  
 McGill Family Farms  
 Mile 30 Farms Ltd

Murray Froebe  
 P & D Froese Farm Ltd  
 Pallister Farm Ltd  
 Patrick Comte  
 Patsy Michiels  
 Patti McKenzie  
 Redview Farms Ltd  
 Rick Vaags  
 Rivers Agricultural Society  
 Rivers Women's Institute  
 RM of Louise  
 Robert & Charlene Graham  
 Ron Brand  
 Rutter Farms  
 Scott Van Alstyne  
 Sheena Pitura  
 Southwest B Women's Institute  
 Stephen & Carolyn Biggar  
 Stoesz Acres Ltd  
 Talbot & Theresa Bergsma  
 Tenesha Lawson  
 Theresa Bolton  
 Tiffany Dancho  
 Tim Rollheiser  
 Timothy Swynar  
 Tiny Creek Farms Ltd  
 Todd Hyra  
 Tracey Shelton  
 Tracy Gilson  
 WB Whitehead Farms  
 Wentworth Ag Inc  
 Woodmore Women's Institute

Empowering growth since 1988

# OUR REACH IN

# 2018

**30,000**  
students

**7**  
new classroom resources

**180**  
schools

**3,978**  
Resource Downloads

**716**  
volunteers

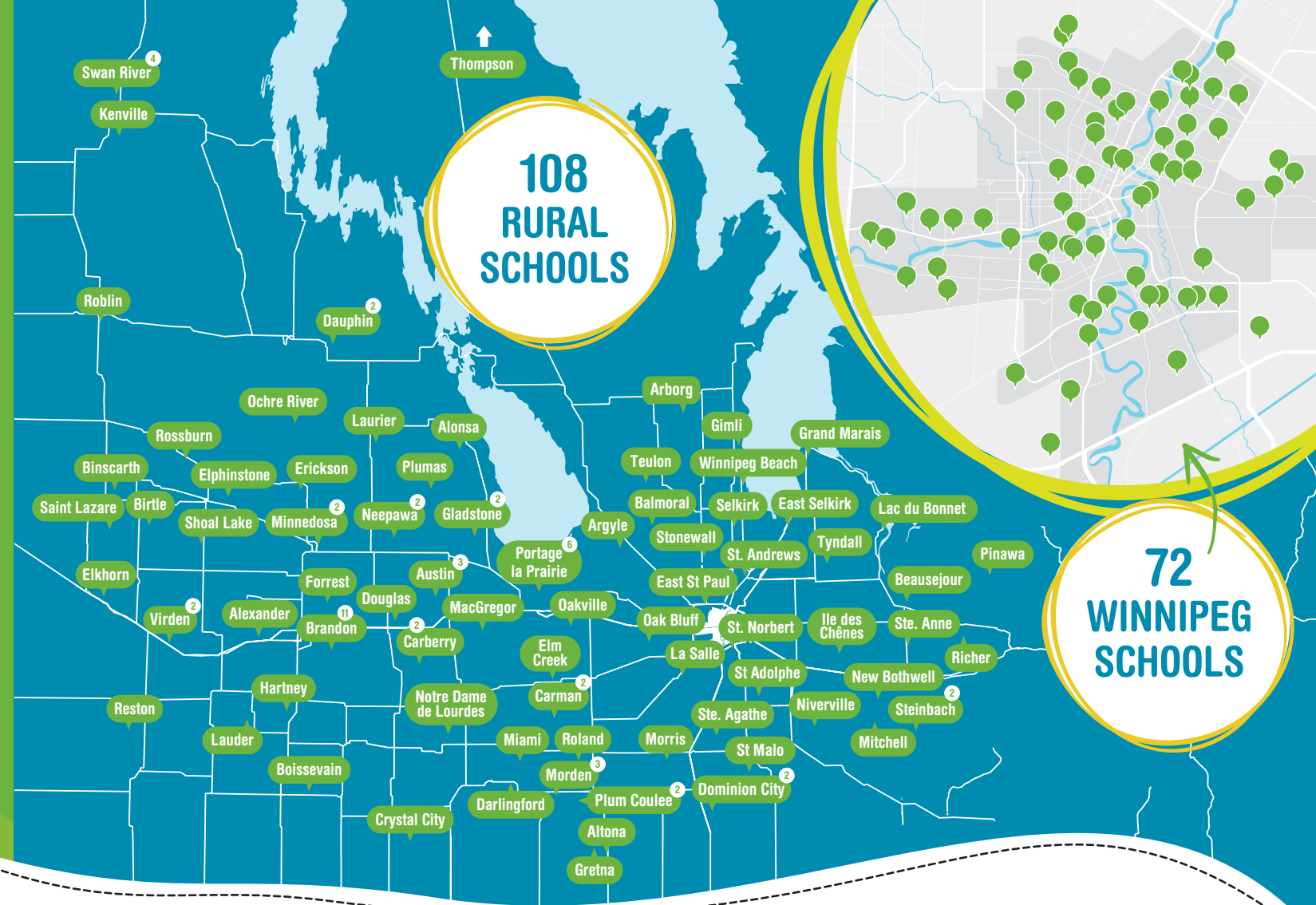
**53**  
Little Green Thumbs gardens

**9,956**  
online users

**32,548**  
page views

## SCHOOL LIST

- |                                  |   |                                     |                             |                            |                                    |                            |                                  |                                       |                                     |
|----------------------------------|---|-------------------------------------|-----------------------------|----------------------------|------------------------------------|----------------------------|----------------------------------|---------------------------------------|-------------------------------------|
| Alexander School                 | Carman Collegiate                           | École Guyot                         | École St. Adolphe School    | Greenway School            | La Verendrye School                | Morris School              | R. D. Parker Collegiate          | Shamrock School                       | Taylor School                       |
| Alonsa School                    | Chancellor Elementary                       | École Harrison                      | École St. Malo School       | Gretna Elementary          | Lac Du Bonnet Senior               | Mulvey School              | R. J. Waugh                      | Sherwood School                       | Teulon Elementary                   |
| Amber Trails Community School    | Christ The King School                      | École Île-Des-Chênes School         | École St. Norbert Immersion | Grosvenor School           | Lightly School (Clearwater Colony) | Neepawa Area Collegiate    | Radisson School                  | Shoal Lake School                     | Thomas Greenway Middle Years School |
| Angus Mckay School               | Christian Heritage School                   | École James Nisbet Community School | Edelweiss School            | H. S. Paul School          | Linden Lanes School                | Neil Campbell School       | Reston School                    | Sigurbjorg Stefansson Early School    | Tyndall Park Community School       |
| Arborg Early/Middle Years School | Collège Béliveau                            | École Laurier                       | Elkhorn School              | Happy Thought School       | Linwood School                     | New Era School             | Richer School                    | Sisler High School                    | Valleyview Centennial School        |
| Austin Elementary                | Collège Garden City Collegiate              | École Leila North Middle School     | Elm Creek School            | Hartney School             | Lt. Col. Barker V.C. School        | Niverville Elementary      | River Elm School                 | Smith-Jackson School                  | Victory School                      |
| Bernie Wolfe Community School    | Community Bible Fellowship Christian School | École Marie-Anne-Gaboury            | Elmdale School              | Hazel M. Kellington School | MacGregor Elementary School        | Nordale School             | Riverdale School                 | St. Andrew's School                   | Vincent Massey Collegiate           |
| Binscarth Elementary             | Crystal City Early Years School             | École Morden Middle School          | Emerson Elementary          | Heritage School            | Maple Grove Colony School          | Norquay School             | Riverview School                 | St. George School                     | Virde Junior High                   |
| Bird's Hill School               | David Livingstone School                    | École Provencher                    | Erickson Elementary         | Heyes Elementary           | Maple Leaf Elementary School       | Oak Bluff Community School | Robert H. Smith School           | St. Gerard School                     | W. C. Miller Collegiate             |
| Birtle Elementary                | Donwood Elementary School                   | École Morden Middle School          | F. W. Gilbert Elementary    | Hidden Valley School       | Marion School                      | Oakville School            | Robert Smith Elementary          | St. Ignatius School                   | Walter Whyte School                 |
| Boissevain School                | Douglas Elementary                          | École Provencher                    | Faith Academy               | J. H. Bruns Collegiate     | Mary Montgomery School             | Ochre River                | Roblin Elementary                | St. Maurice School                    | Waverly Park School                 |
| Bothwell School                  | Earl Grey School                            | École Regent Park                   | Faraday School              | J. R. Reid School          | Meadows School                     | Pacific Junction School    | Roland School                    | Ste. Anne Elementary School           | West Valley Elementary              |
| Brant-Argyle School              | Earl Oxford School                          | École Robert Browning               | Forrest Elementary          | John De Graff School       | Meadows West School                | Pine Creek School          | Roseau Valley School             | Stonybrook Middle School              | Westpark School                     |
| Brennan School                   | École Arthur Meighen School                 | École Marie-Anne-Gaboury            | General Byng School         | John Pritchard School      | Miami School                       | Plum Coulee School         | Rossburn Elementary              | Strathcona School                     | Whyte Ridge Elementary              |
| Brock-Corydon School             | École Bannatyne                             | École Sacre-Coeur School            | Gillis School               | Joseph Teres School        | Minnedosa Collegiate               | Plumas Elementary          | Royal School                     | Strathmillian School                  | William Morton Collegiate           |
| Calvin Christian School          | École Beausejour Early Years                | École Sage Creek School             | Gladstone Elementary        | Kamsley School             | Mitchell Elementary School         | Polson School              | Sansome School                   | Sun Valley School                     | Windsor School                      |
| Carberry Collegiate              | École Crescentview School                   | École Sainte-Agathe                 | Gray Academy                | Keeseekoowenin School      | Montrose School                    | Princess Margaret School   | Seven Oaks Adult Learning Centre | Swan Valley Regional Secondary School | Winnipeg Beach School               |
|                                  | École Dieppe School                         | École South Pointe School           | Of Jewish Education         | Kent Road School           | Morden Middle School               | Principal Sparling School  |                                  | Tanner's Crossing School              | Yellowquill School                  |
|                                  |   | École St-Lazare                     | Green Ridge School          | La Salle School            |                                    |                            |                                  |                                       |                                     |



# FINANCIAL STATEMENTS

## INDEPENDENT PRACTITIONER'S REVIEW ENGAGEMENT REPORT TO THE BOARD OF DIRECTORS OF AGRICULTURE IN THE CLASSROOM - MANITOBA INC.

We have reviewed the accompanying financial statements of Agriculture in the Classroom - Manitoba Inc. that comprise the statement of financial position as at December 31, 2018, and the statements of operations, changes in net assets and cash flows for the year then ended, and a summary of significant accounting policies and other explanatory information.

### Management's Responsibility for the Financial Statements

Management is responsible for the preparation and fair presentation of these financial statements in accordance with Canadian accounting standards for not-for-profit enterprises, and for such internal control as management determines is necessary to enable the preparation of financial statements that are free from material misstatement, whether due to fraud or error.

### Practitioner's Responsibility

Our responsibility is to express a conclusion on the accompanying financial statements based on our review. We conducted our review in accordance with Canadian generally accepted standards for review engagements, which require us to comply with relevant ethical requirements.

A review of financial statements in accordance with Canadian generally accepted standards for review engagements is a limited assurance engagement. The practitioner performs procedures, primarily consisting of making inquiries of management and others within the entity, as appropriate, and applying analytical procedures, and evaluates the evidence obtained.

The procedures performed in a review are substantially less in extent than, and vary in nature from, those performed in an audit conducted in accordance with Canadian generally accepted auditing standards. Accordingly, we do not express an audit opinion on these financial statements.

### Conclusion

Based on our review, nothing has come to our attention that causes us to believe that the financial statements do not present fairly, in all material respects, the financial position of Agriculture in the Classroom - Manitoba Inc. as at December 31, 2018, and the results of its operations and its cash flows for the year then ended in accordance with Canadian accounting standards for not-for-profit enterprises.

BDO Canada LLP

Chartered Professional Accountants

RM of Stanley, Manitoba  
March 5, 2019c

Agriculture in the Classroom - Manitoba inc.

## STATEMENT OF FINANCIAL POSITION (UNAUDITED)

DECEMBER 31	2018	2017
<b>ASSETS</b>		
<b>Current</b>		
Cash	\$ 5,453	\$ 70,588
Restricted cash (Note 6)	149,353	140,919
Accounts receivable	28,718	20,993
Prepaid expenses	828	1,804
Current portion of long-term investments (Note 2)	86,797	85,076
	<u>271,149</u>	<u>319,380</u>
<b>Long-term investments (Note 2)</b>	<b>159,097</b>	<b>156,507</b>
	<u>\$ 430,246</u>	<u>\$ 475,887</u>
<b>LIABILITIES AND NET ASSETS</b>		
<b>Current</b>		
Accounts payable and accrued liabilities (Note 4)	\$ 130,874	\$ 133,926
Deferred membership revenue	20,000	20,040
Deferred contributions (Note 5)	27,049	19,089
	<u>177,923</u>	<u>173,055</u>
<b>Net assets</b>		
Unrestricted	252,323	302,832
	<u>\$ 430,246</u>	<u>\$ 475,887</u>

Approved by:  President

 Executive Director

Agriculture in the Classroom - Manitoba inc.

## STATEMENT OF CHANGES IN NET ASSETS (UNAUDITED)

FOR THE YEAR ENDED DECEMBER 31	2018	2017
Net assets, beginning of year	\$ 302,832	\$ 293,782
Excess (deficiency) of revenue over expenditures for the year	(50,509)	9,050
<b>Net assets, end of year</b>	<b>\$ 252,323</b>	<b>\$ 302,832</b>

The accompanying notes are an integral part of these financial statements.

Agriculture in the Classroom - Manitoba inc.

## STATEMENT OF OPERATIONS (UNAUDITED)

FOR THE YEAR ENDED DECEMBER 31	2018	2017	FOR THE YEAR ENDED DECEMBER 31	2018	2017
<b>REVENUE</b>			<b>EXPENDITURES</b>		
Memberships	\$ 245,370	\$ 220,354	Advertising and promotion	\$ 6,374	\$ 2,633
Donations	130,320	88,972	Agriculture in the City	-	16,907
Project administration revenue	58,425	63,433	Agriculture in the Classroom Canada	2,023	-
Agriculture in the City	-	16,907	Agrium Seed Survivor program expense	-	20,743
Agriculture in the Classroom Canad	2,023	-	Amazing Agriculture Adventure	16,856	16,339
Agrium Seed Survivor Program	-	20,743	Amazing Rangeland Adventure	-	6,008
Amazing Agriculture Adventure	9,353	11,306	Bad debt expense	1,380	240
Amazing Rangeland Adventure	-	6,008	Canadian Ag Literacy Month	10,977	11,926
Canadian Ag Literacy Month	10,977	11,926	Gen Ag	13,600	19,820
Gen Ag	13,600	19,820	Global Youth Institute	2,176	3,190
Global Youth Institute	2,175	3,400	Growing Forward 2 - strategic plan/database	24,592	-
Government Funding - Growing Forward 2 (strategic plan/database)	24,255	-	Insurance	2,196	2,356
Interest income	5,914	5,492	Interest and bank charges	2,572	852
International Year of the Pulse	-	3,418	International Year of the Pulse	-	3,418
Little Green Thumbs	31,730	33,881	Little Green Thumbs	31,730	33,881
Made in Manitoba Breakfast	-	25,800	Made in Manitoba Breakfast	-	26,258
Manitoba Ag Days	9,200	10,813	Manitoba Ag Days	9,200	10,813
Other revenue	2,005	11,593	Meetings and conferences	16,523	18,268
Special Projects	445	-	Miscellaneous	2,033	1,708
Summer student grant	5,473	-	Office expenses	18,925	14,314
	\$ 551,265	\$ 553,866	Professional fees	9,261	8,872
			Rental	6,600	6,060
			Salaries and wages	397,433	299,238
			Special projects	445	-
			Telephone and internet	13,712	10,409
			Travel	13,166	10,563
				601,774	544,816
			<b>Excess of revenue over expenditures for the year</b>	\$ (50,509)	\$ 9,050

The accompanying notes are an integral part of these financial statements.

Agriculture in the Classroom - Manitoba inc.

## STATEMENT OF CASH FLOWS (UNAUDITED)

FOR THE YEAR ENDED DECEMBER 31	2018	2017
<b>Cash flows from operating activities</b>		
Excess of revenue over expenditures for the year	\$ (50,509)	\$ 9,050
Changes in non-cash working capital:		
Accounts receivable	(7,725)	(10,954)
Prepaid expenses	977	3,072
Accounts payable and accrued liabilities	(3,052)	118,030
Deferred contributions	7,960	(21,808)
Deferred membership revenue	(40)	19,540
	(52,389)	116,930
<b>Cash flows from investing activities</b>		
Purchase of investments	(4,312)	(4,203)
<b>Net (decrease) in cash</b>	<b>(56,701)</b>	<b>112,727</b>
<b>Cash, beginning of the year</b>	<b>211,507</b>	<b>98,780</b>
<b>Cash, end of the year</b>	<b>\$ 154,806</b>	<b>\$ 211,507</b>
<b>Represented by:</b>		
Unrestricted cash	\$ 5,453	\$ 70,588
Restricted cash	149,353	140,919
	\$ 154,806	\$ 211,507

The accompanying notes are an integral part of these financial statements.



## NOTES TO FINANCIAL STATEMENTS (UNAUDITED)

DECEMBER 31, 2018

### 1. SIGNIFICANT ACCOUNTING POLICIES

Purpose of the Organization	Agriculture in the Classroom - Manitoba Inc. ("the organization") is engaged in promoting agriculture in the schools through the development of school curriculums that include agriculture and through agriculture awareness interactive programs and events.  The organization is a registered charity and, as such, is exempt from income tax and may issue income tax receipts to donors.
Basis of Accounting	The financial statements have been prepared using Canadian accounting standards for not-for-profit organizations.
Use of Estimates	The preparation of financial statements in accordance with Canadian accounting standards for not-for-profit organizations requires management to make estimates and assumptions that affect the reported amounts of assets, liabilities and the disclosure of contingent assets and liabilities at the date of the financial statements, and the reported amounts of revenues and expenses during the reporting period. Actual results could differ from those estimates and may have an impact on future periods.
Financial Instruments	Financial instruments are recorded at fair value when acquired or issued. In subsequent periods, equities traded in an active market and derivatives are reported at fair value, with any unrealized gains and losses reported in operations. In addition, all bonds and guaranteed investment certificates have been designated to be in the fair value category, with gains and losses reported in operations. All other financial instruments are reported at cost or amortized cost less impairment, if applicable. Financial assets are tested for impairment when changes in circumstances indicate the asset could be impaired. Transaction costs on the acquisition, sale or issue of financial instruments are expensed for those items remeasured at fair value at each statement of financial position date and charged to the financial instrument for those measured at amortized cost.
Tangible Capital Assets	It is the organization's policy to expense tangible capital assets in the year of acquisition. Acquisitions in 2018 totalled \$7,571.
Contributed Materials & Services	Volunteers and citizens contributed materials and service to assist the organization in carrying out its activities. Because of the difficulty in determining their fair value, contributed material and services are not recognized in the financial statements.
Revenue Recognition	The organization follows the deferral method of accounting for contributions. Restricted contributions are recognized as revenue in the year in which the related expenses are incurred. Unrestricted contributions are recognized as revenue when received or receivable if the amount to be received can be reasonably estimated and collection is reasonably assured.  Revenue from annual memberships is recognized in the year corresponding to the membership term. Project administration revenue is recognized when services are provided.

## NOTES TO FINANCIAL STATEMENTS (UNAUDITED)

DECEMBER 31, 2018

### 2. LONG-TERM INVESTMENTS

	2018	2017
3.25% Crosstown Civic Credit Union guaranteed investment certificate maturing August 2023	\$ 39,378	\$ -
1.35% Crosstown Civic Credit Union guaranteed investment certificate maturing July 2019	46,270	-
2.60% Crosstown Civic Credit Union guaranteed investment certificate maturing July 2019	29,937	29,178
2.20% Crosstown Civic Credit Union guaranteed investment certificate maturing October 2021	40,019	39,158
2.4% Crosstown Civic Credit Union guaranteed investment certificate maturing August 2020	40,269	-
2.25% Crosstown Civic Credit Union guaranteed investment certificate maturing August 2019	10,590	10,357
2.45% Crosstown Civic Credit Union guaranteed investment certificate maturing August 2022	39,431	38,489
Crosstown Civic Credit Union guaranteed investment certificates matured during the year	-	124,401
	<b>245,894</b>	<b>241,583</b>
Less: current portion of long-term investments:	<b>(86,797)</b>	<b>(85,076)</b>
	\$ <b>159,097</b>	\$ 156,507

### 3. LINE OF CREDIT

The organization has an approved line of credit of \$25,000 from the Crosstown Civic Credit Union bearing interest at prime rate (3.95% at December 31, 2018) plus 0.5%, calculated and payable monthly. The line of credit is secured by an assignment of Credit Union deposits and a general security agreement on the organization. At December 31, 2018 the organization had unutilized capacity under its line of credit facility of \$25,000.

### 4. ACCOUNTS PAYABLE AND ACCRUED LIABILITIES

	2018	2017
Trade accounts payable	\$ 8,569	\$ 12,096
Monsanto "Farmers Grow Communities" grants payable	122,305	121,830
	\$ <b>130,874</b>	\$ 133,926

## NOTES TO FINANCIAL STATEMENTS (UNAUDITED)

### 5. DEFERRED CONTRIBUTIONS

Deferred contributions reported in operations relate to restricted contributions received in the current period for Little Green Thumbs, Ag Day School Tours, Agriculture in the Classroom Canada, Gen Ag, Global Youth Institute and Canadian Ag Literacy Month that are related to subsequent year expenses. Changes in the deferred contributions balance reported in the operations are as follows:

	2018	2017
Balance, beginning of year	\$ 19,089	\$ 40,898
Add: Contributions received in the year	117,697	144,519
Less: Amount recognized as revenue	(109,737)	(166,328)
Balance, end of year	\$ 27,049	\$ 19,089

### THE BALANCE IS REPRESENTED BY THE FOLLOWING:

	2018	2017
Little Green Thumbs	9,049	\$ 7,089
Ag Days school tours	8,000	-
Specific programming	10,000	-
Canadian Ag Literacy Month	-	12,000
	\$ 27,049	\$ 19,089

### 6. RESTRICTED CASH

Restricted cash includes \$122,305 received for Monsanto "Farmers Grow Communities" grants to be awarded and the unspent portion of restricted contributions for specific programs presented as deferred contributions.

### 7. FINANCIAL INSTRUMENTS Credit risk

Credit risk is the risk that one party to a financial instrument will cause a financial loss for the other party by failing to discharge an obligation. The organization is exposed to credit risk resulting from the possibility that a customer or counterparty to a financial instrument defaults on their financial obligations. The organization's financial instruments that are exposed to concentrations of credit risk relate primarily to its accounts receivable from companies that operate in the agriculture industry.

#### Interest rate risk

Interest rate risk is the risk that the fair value or future cash flows of a financial instrument will fluctuate because of changes in market interest rates. The organization is exposed to interest rate risk on its floating interest rate line of credit. Currently the organization has not drawn on this credit facility and therefore the risk is considered to be limited.

*There have not been any changes in these risks from the prior year.*

# THE NEXT GENERATION

We work hard to cut through the noise to maintain public trust, pique interest in agriculture and prepare our industry's future employees and consumers. The agriculture industry is complex and multi-faceted, but our story is unified, genuine, and dynamic. In other words, it's something to celebrate.

We are stronger together. Thank you to our 2018 corporate supporters for empowering us to be the leader in agriculture education.

To learn how you can get involved by becoming a member or volunteer, visit [aitc.mb.ca](http://aitc.mb.ca)

### CULTIVATOR (\$20,000)



### PATRON (\$10,000)



### BUILDER (\$5,000)

Dow AgroSciences  
Grain Elevator and Processing Society  
MacDon Industries  
Manitoba Corn Growers Association Inc  
Manitoba Education and Training  
Parrish and Heimbecker  
Viterra



*"Without member support, it is impossible to inform future consumers how Canada's abundant food supply is the healthiest and safest in the world – and it all comes from the farm!"*  
- Bob Bartley,  
AITC-M Board Member,  
Farmer



[aitc.mb.ca](http://aitc.mb.ca)

**Agriculture in the Classroom-Manitoba**

Box 278 GRP 327 RR#3

Selkirk, Manitoba, R1A 2A8

Toll Free: 1-866.487.4029

Proud member of Agriculture in the Classroom Canada